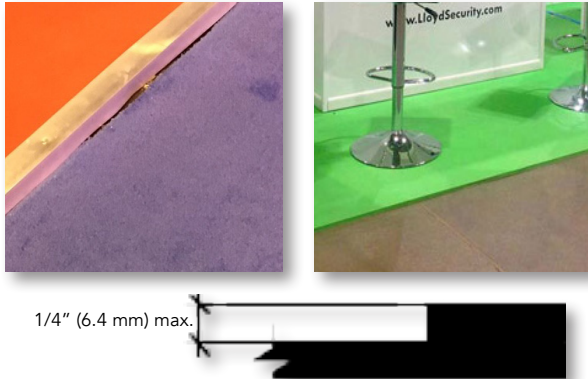


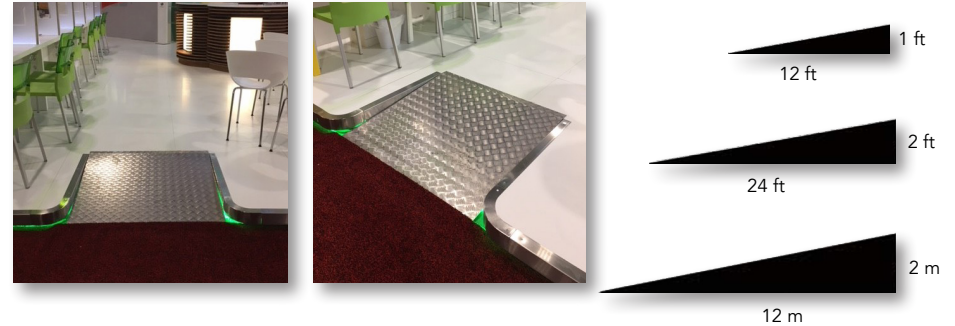
# IAAPA EXHIBIT BOOTH RAISED FLOORING REGULATIONS

Raised flooring in exhibit booths is required to adhere to the following guidelines. Please note that a change in level is defined as the elevation of a walking surface.

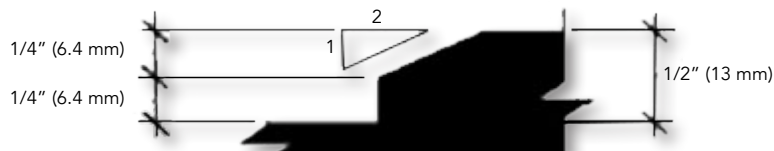
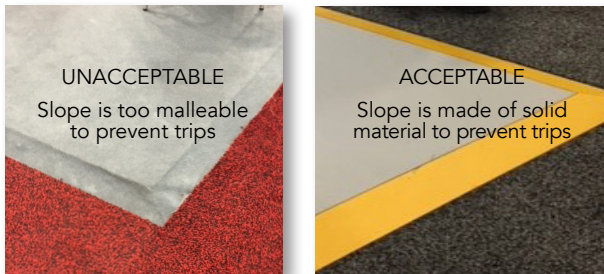
Changes in level up to 1/4" (6.4 mm) may be vertical and does not require a beveled or special edge treatment.



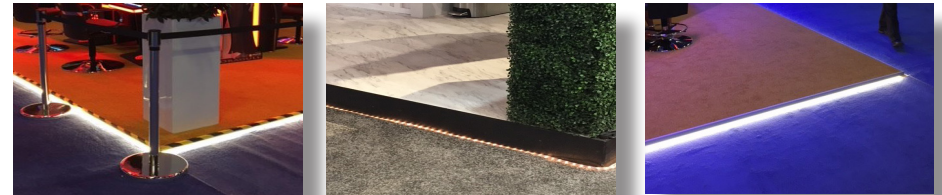
Changes in level greater than 1/2" (13 mm) are required to be ramped. To accommodate the widest range of users, ramps should have the least possible running slope, which may not be steeper than 1:12.



Changes in level greater than 1/4" (6.4 mm) high minimum and not more than 1/2" (13 mm) high maximum must be beveled with a slope not steeper than 1:2. A change in level of 1/2" (13 mm) is permitted to be 1/4" (6.4 mm) vertical plus 1/4" (6.4 mm) beveled. But, the combined change in level may not exceed 1/2" (13 mm). To prevent tripping, beveled slopes must be made of solid material.



**In addition** to beveled slopes and ramp requirements, further suggestions to clearly highlight a change in floor levels are shown below.



Corner plants, stanchions, lights, and hazard tape can help call additional attention to raised floors.

Examples of **unacceptable** raised flooring that does not comply with facility policies are shown below.

